

the
LAKESIDE HOMES COLLECTION

at hampton lake



W: [HAMPTONLAKE.COM/LAKESIDE](https://hamptonlake.com/lakeside)
E: INFO@HAMPTONLAKE.COM
P: 843.310.6339

ABOUT THE BUILDER

Executive Custom Homes is a South Carolina based homebuilder which has delivered over 1,000 new homes within the state. The company is owned and led by Eddie Yandle, a SC Master Certified Builder and a Certified NAHB Green Professional. Yandle has received numerous awards for home-building innovation, floorplans and design trends.



SITEMAP



LAKESIDE AMENITY CENTER

Mooring Line Court

Mooring Line Place

Hampton Lake Crossing

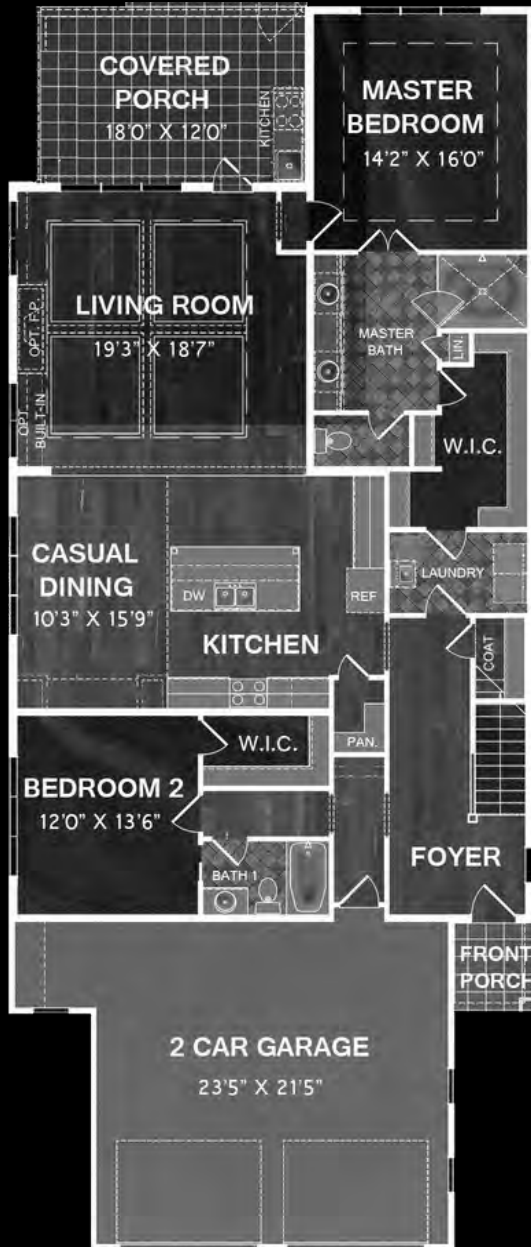
Private Boat Slips

5
4
3
2
1 Model

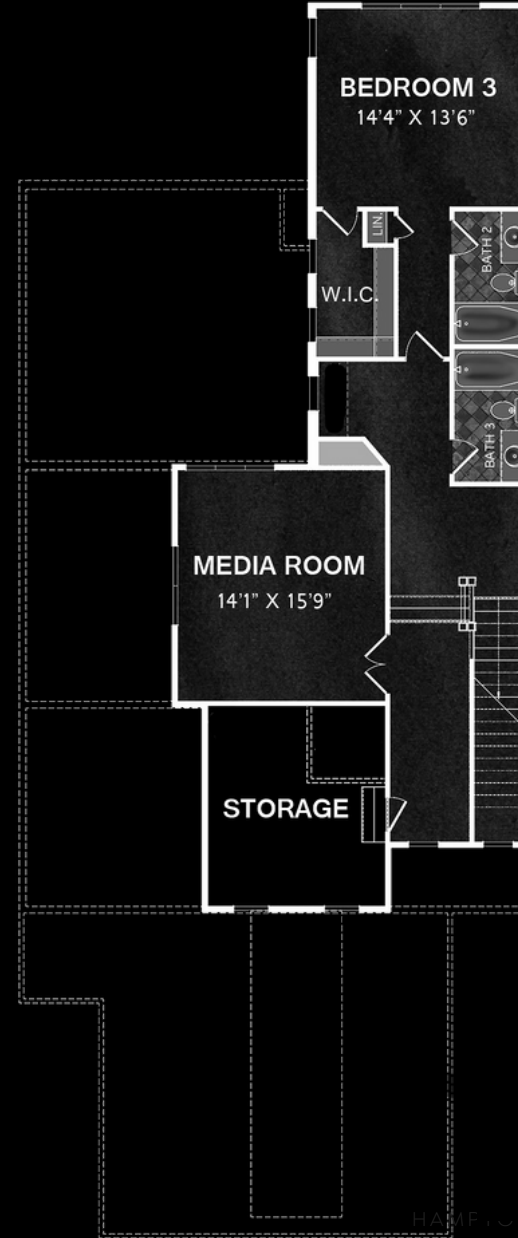
NATURE PRESERVE

FLOORPLAN

FLOOR 1



FLOOR 2



*The interior layout may be constructed in a slightly different configuration



PRIVATE BOAT DOCKS

Each home in the collection features an inset, horizontal boat dock for year-round storage of up to any size boat permitted for Hampton Lake. The construction offers a bulkhead wall, tie down cleats, bumper edging, and low-maintenance composite decking. The wide deck has room for lounge chairs, deck boxes, and space for fishing, birdwatching to the adjacent wetland preserve, or just relaxing on waterfront.





HOME FEATURES & SPECIFICATIONS

The Lakeside Collection Homes live big with tall ceilings, thoughtful layouts, and plenty of storage which is often overlooked. Finishes are light and modern, and reflect on-trend design aesthetics that enhance the plentiful natural light.

- Single Family Home
- 2,817sf Heated Living Space
- 4 Bedrooms | 4 Baths
- 2-Car Garage
- Private Boat Dock



LIVING & DINING ROOM

The open floor plan ties the large living room, dining, and kitchen space with towering 14ft ceilings that provide a real sense of volume. Large picture windows with transoms flood this space with natural light. A gas fireplace is the focal point of the living room and is enhanced by flanking windows and build-in cabinets.







- LARGE KITCHEN ISLAND WITH BAR SEATING
- ENHANCED MODERN CABINERY
- QUARTZ COUNTERTOPS
- PRO-STYLE SAMSUNG STAINLESS APPLIANCES
- GAS COOKTOP
- WALK-IN PANTRY
- SUBWAY TILE BACKSPLASHES

KITCHEN

The large and open kitchen is light and sophisticated with high-quality Samsung appliance package and durable quartz countertops throughout. A walk-in pantry offers convenience while keeping clutter out of view. Double wall ovens and a gas cooktop aid cooks of every level in crafting their culinary skills while easing preparation for large gatherings.





PRIMARY BEDROOM SUITE

The entire side of the homes are dedicated to the primary suite which peer out to the water and serene wetland preserve through ceiling - high picture windows. The master bath offers a massive shower with frameless glass in addition to a freestanding soaking tub perfect for relaxing after a day on the Lake. A large walk-in closet completes the suite.

- ON SUITE BATHROOM
- WALK-IN SHOWER WITH FRAMELESS GLASS DOORS
- QUARTZ COUNTERTOPS IN BATHROOM
- FREESTANDING SOAKING TUB
- WALK-IN CLOSET
- BUILT-IN DOUBLE VANITIES





Bedroom 4 (2nd Floor)



Bedroom 2 (1st Floor)



Bedroom 3 (2nd Floor)

Screened Lakeside Patio



ADDITIONAL FEATURES



Landing Leads to Conditioned Storage Room



Low-Maintenance Landscaping



the
LAKESIDE HOMES COLLECTION
at hampton lake

The final 5 homes in the Lakeside Home Collection are now available and listed exclusively by Sequel Real Estate Group. These spacious lakefront properties now include a private boat dock and are situated just steps from Hampton Lake's award-winning amenity center. Call Sequel Real Estate group today for pricing & availability.

WWW.HAMPTONLAKE.COM/LAKESIDE



SEQUEL REAL ESTATE GROUP

REAL ESTATE BROKERAGE

Sequel Real Estate Group is a small boutique team of experienced, licensed real estate agents serving the Bluffton, and Hilton Head Island, SC region. With specific expertise in the Lowcountry's finest master-planned communities, we advise buyers and sellers with specialized neighborhood knowledge. and counsel. We provide our clients excellent customer service and have a proven track record of getting results quickly while negotiating the best possible price and terms.

CONTACT INFORMATION

7 HAMPTON LAKE DRIVE
BLUFFTON, SC 29910

W: WWW.SEQUELSC.COM
E: INFO@HAMPTONLAKE.COM
P: 843.310.6339